

Original BMW Parts and Accessories. Installation Instructions.



M Performance Silencer System Retrofit Kit.

BMW M3 Saloon (G80)

BMW M3 Touring (G81)

BMW M4 Coupé (G82)

BMW M4 Convertible (G83)

BMW M2 Coupé (G87)

Retrofit kit number

For (G80, G81, G82 and G83)

18 30 5 A23 278	M Performance silencer system ECE, ROW
18 30 5 A23 283	M Performance silencer system EU
18 30 2 464 494	M Performance silencer system US
18 30 5 A23 282	M Performance heat shield
18 30 5 A23 286	Titanium tailpipe trims module
51 19 5 A19 8B5	Carbon rear diffuser

For (G87)

18 30 5 A6A 719	M Performance silencer system EU/ROW
18 30 5 A6A 720	M Performance silencer system US
18 30 5 A23 282	M Performance heat shield
18 30 5 A6A 6A7	Titanium tailpipe trims module
18 30 5 A86 350	Anodised tailpipe trim
51 19 5 A46 B54	Carbon rear diffuser

Installation time

The installation time is **approx. 1.5 to 2.0 hours**. This may vary depending on the condition of the vehicle and the equipment in it.

Important information

These installation instructions are primarily designed for use within the BMW dealership organisation and by authorised BMW service companies.

These installation instructions are intended for use by qualified specialist staff trained on BMW cars with the relevant expert knowledge.

All work must be completed using the latest BMW repair manuals, wiring diagrams, servicing manuals and work instructions, in a logical order, using the prescribed tools (special tools), and observing current health and safety regulations.

If you experience installation or functional problems, restrict troubleshooting to approx. 0.5 hours for mechanical work and 1.0 hours for electrical work.

To avoid unnecessary extra work and/or costs, please send an inquiry to the technical parts support team.

Quote the following information:

- VIN,
- retrofit kit part number,
- a detailed description of the problem,
- any work already carried out.

Do not archive the printout of these installation instructions. The current version can be found in the EPC.

Pictograms



Denotes instructions that draw your attention to dangers.



Denotes instructions that draw your attention to special features.



Denotes the end of the instruction or warning text.

Installation information

Some of the installation is shown only on the left-hand side of the car; proceed in the same way on the right-hand side of the car.

All illustrations show LHD (left-hand drive) cars; proceed in the same way on RHD (right-hand drive) cars.

Care instructions

Print out the care instructions at the end of these installation instructions and give them to the customer.

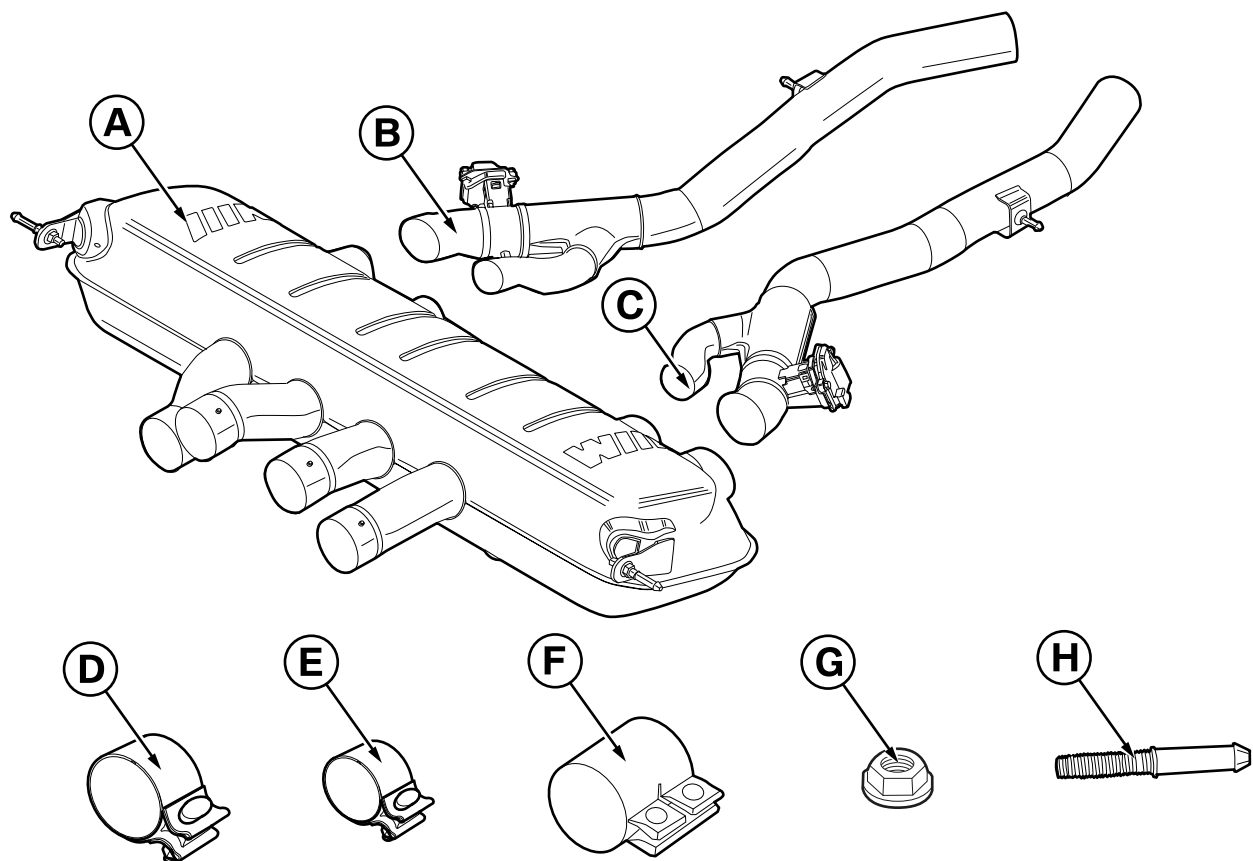
Special tools required

None

Table of contents

Section	Page
1. M Performance silencer system parts list	4
2. Titanium tailpipe trims module parts list	5
3. Summary for installing the titanium tailpipe trim module	6
4. Rear diffuser parts list	7
5. Preparatory work	8
6. Install the M Performance rear silencer with rear diffuser	9
7. Concluding work and coding	14
8. Care instructions for panel and matt black tailpipe trims	15
9. G8x template AJ part 1 - for cutting the G87 adapter holder, see above.	16
10. G8x template AJ part 2 - for cutting the G87 adapter holder, see above.	17
11. Report 21-00758-CP-GBM-00	18
12. 21-00758-CP-GBM-00	19

1. M Performance silencer system parts list

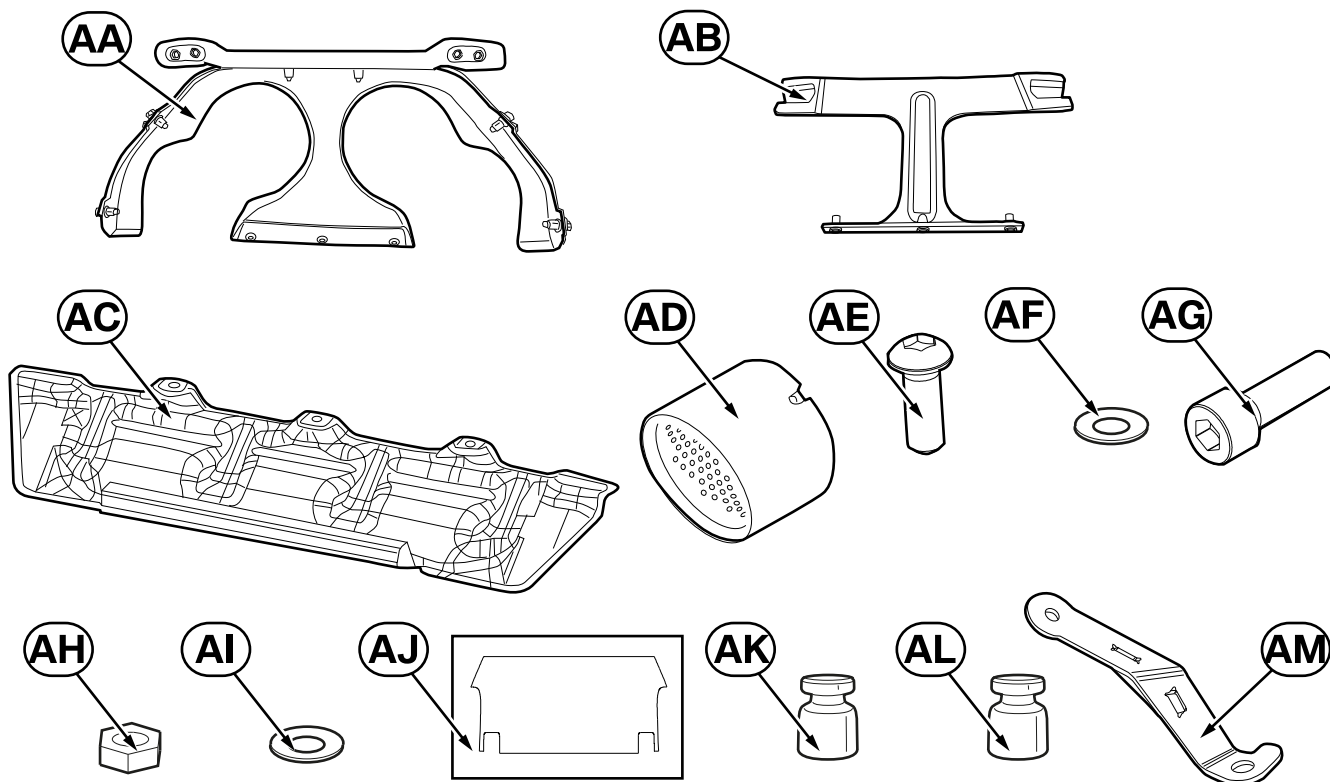


G80 0074 V

Legend

- A** Titanium rear silencer
- B** Front pipe for titanium rear silencer, left
- C** Front pipe for titanium rear silencer, right
- D** Torca clamp Ø 70 mm (2 x)
- E** Torca clamp Ø 52 mm (2 x)
- F** Euro coupler, 70 mm (2 x)
- G** Nut (4 x)
- H** Holder pin (2 x)

2. Titanium tailpipe trims module parts list

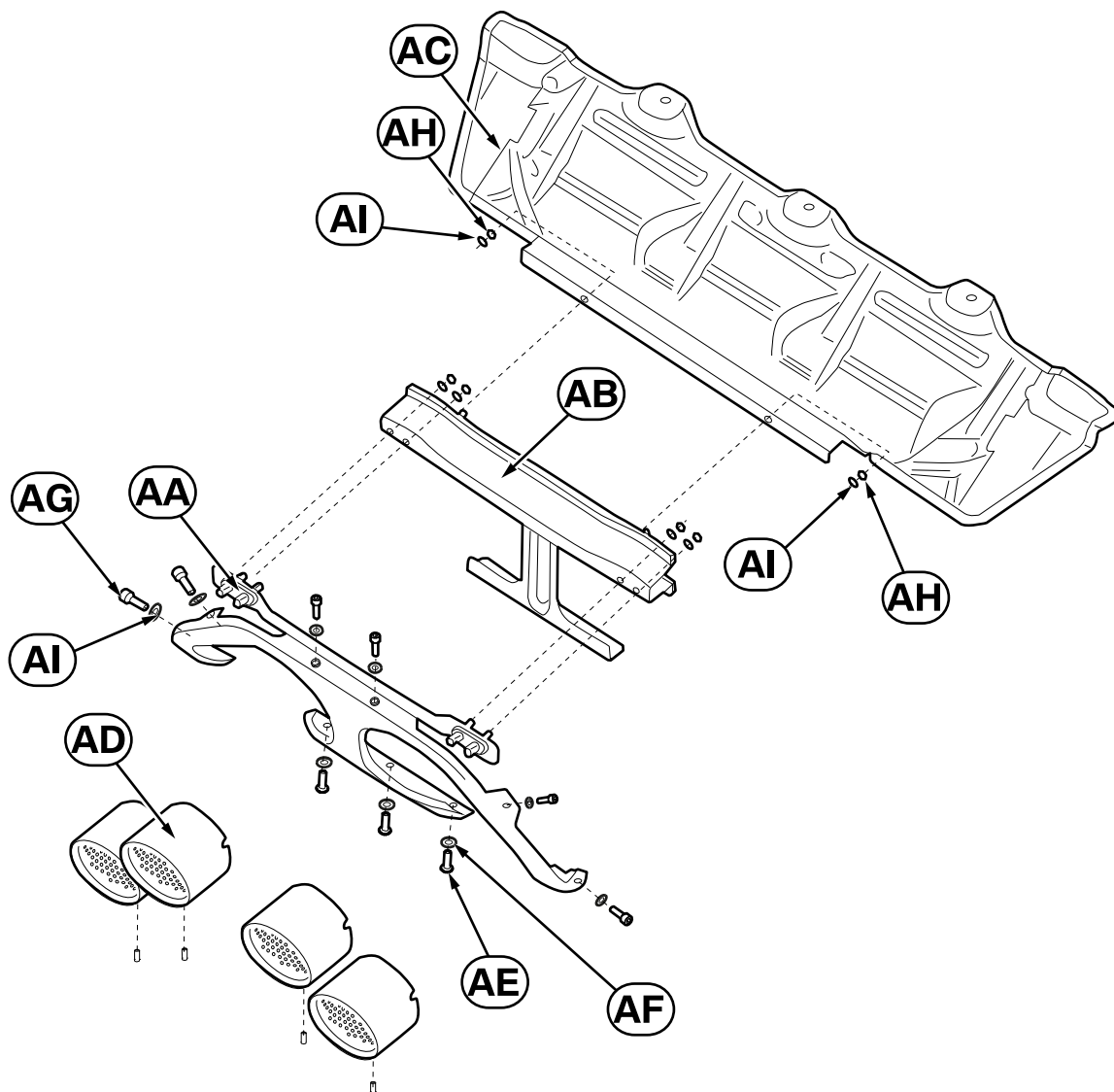


G87 0092 V

Legend

- AA** Panel
- AB** Strut
- AC** Heat shield
- AD** Titanium tailpipe trim (4 x, Part No. 18 30 5 A2C 137)
For G87 cars only (Part No. 18 30 5 A86 350)
- AE** Black fillister head screw, M6 x 16 mm (3 x)
- AF** Black nylon washer M6 (3 x)
- AG** Allen screw M6 x 20 mm (6 x)
- AH** Stop nut M6 (6 x)
- AI** Black washer M6 (12 x)
- AJ** Template for cutting the adapter holder
For G80, G81, G82 and G83 cars only (Part 1 and part 2 are attached to these installation instructions)
Print template Part 1 and Part 2 on DIN A4 paper without scaling, cut them out and glue them together.
- AK** Screw lock (not included in parts kit, see EPC for details and part number)
- AL** High temperature installation paste (not included in parts kit, Part No. 83 23 0 309 003)
- AM** M Performance rear diffuser holder, left/right
For G87 cars only (2 x, right shown, Part No. 51 12 5 A89 AB4)

3. Summary for installing the titanium tailpipe trim module

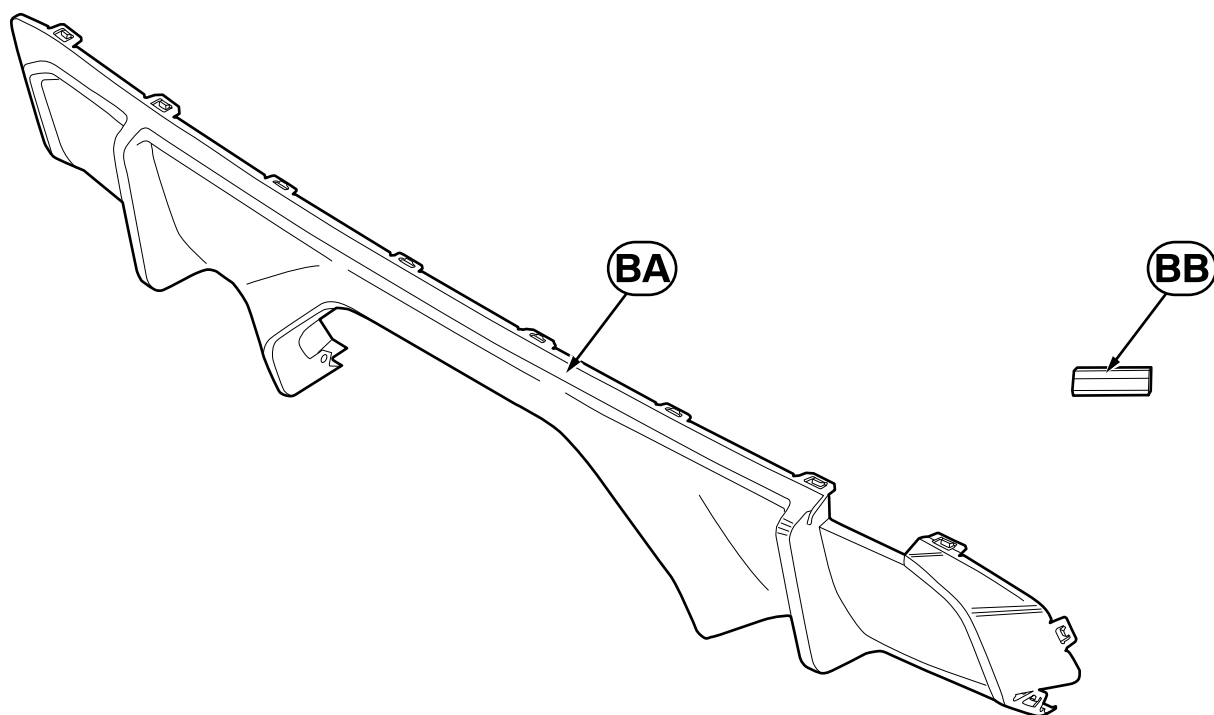


G80 0088 V

Legend

- AA** Panel
- AB** Strut
- AC** Heat shield
- AD** Titanium tailpipe trim (4 x, Part No. 18 30 5 A2C 137)
For G87 cars only (Part No. 18 30 5 A86 350)
- AE** Black fillister head screw, M6 x 16 mm (3 x)
- AF** Black nylon washer M6 (3 x)
- AG** Allen screw M6 x 20 mm (6 x)
- AH** Stop nut M6 (6 x)
- AI** Black washer M6 (12 x)

4. Rear diffuser parts list



G80 0085 V


Legend

BA Carbon rear diffuser

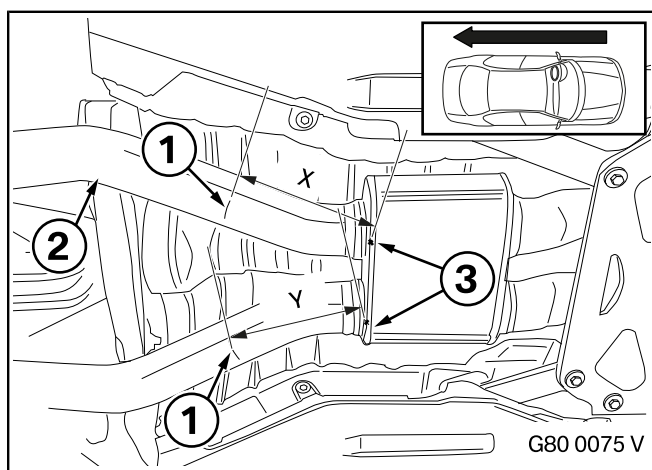
BB Carbon rear towing eyelet cover

For G80, G81, G82 and G83 only (Part No. 51 12 5 A19 8B8)

5. Preparatory work

	ISTA/AIR No.
The following components must be removed first of all	
Remove and install the complete exhaust system	18 00 018
Remove and install/replace the rear diffuser	51 12 315
 Reuse the bottom plastic rivet. ◀	

6. Install the M Performance rear silencer with rear diffuser



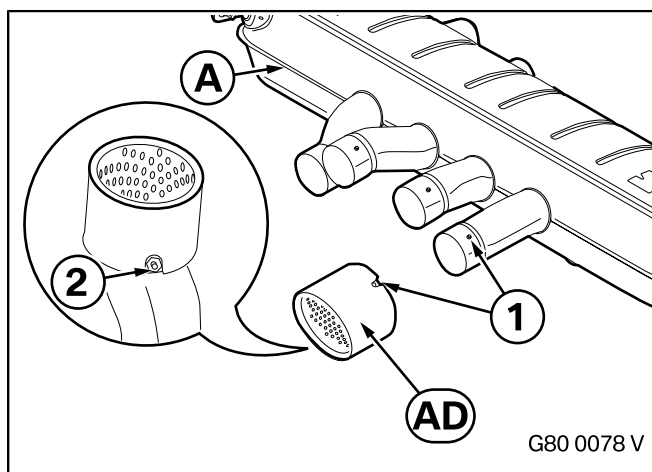
If there are no centrepunch marks (1) on the standard silencer (2), make the appropriate marks.

Measure from the edge of the silencer housing (3) towards the rear.

Make a mark on the left pipe with $x = 180 \text{ mm}$.

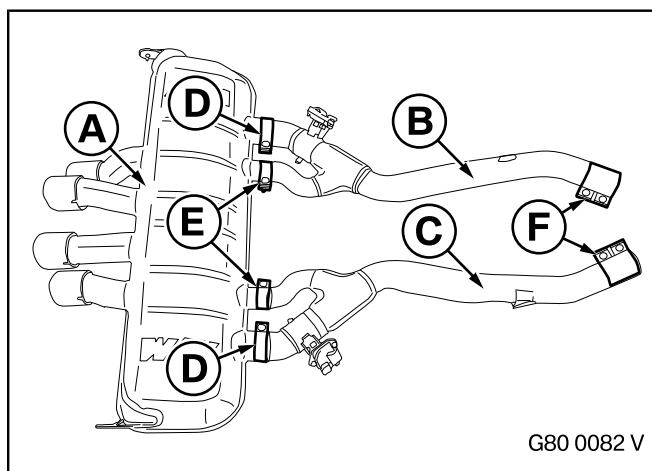
Make a mark on the right pipe with $y = 177 \text{ mm}$.

Cut the standard silencer (2) using suitable equipment and treat the area with the standard anti-corrosion coating.



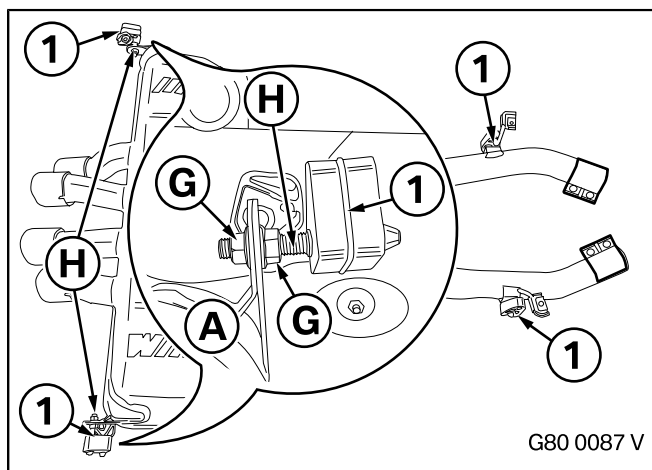
⚠ The surface of the tailpipe trims **AD** is very sensitive to scratching. The protective foil on the tailpipe trims **AD** should therefore not be removed until the installation work has been completed. ◀

Fit the four tailpipe trims **AD**, checking the position of the pin (1). Tighten the grub screws (2) on the tailpipe trims **AD** with a torque of **5 Nm**.



The exhaust system must be fully assembled away from the car. To do this, screw the rear silencer **A** to the front pipes **B** and **C**. Screw the larger pipe ends using clamping rings **D** and the smaller pipe ends using clamping rings **E**. The screw connection on the clamping rings **D** and **E** must point inwards and be tightened with a torque of **55 Nm**.

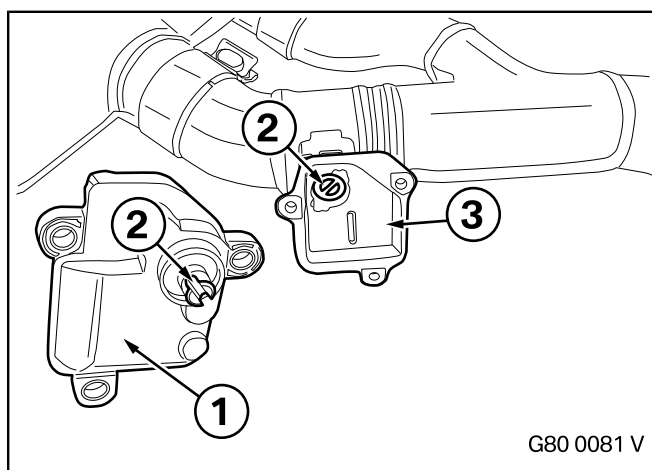
Attach the clamping rings **F** to both ends of the front pipes **B** and **C** so that the screw connection points inwards.



Screw the holder pins **H** with the two nuts **G** to the rear silencer **A**.

Use the four rubber bearings (1) from the standard exhaust system.

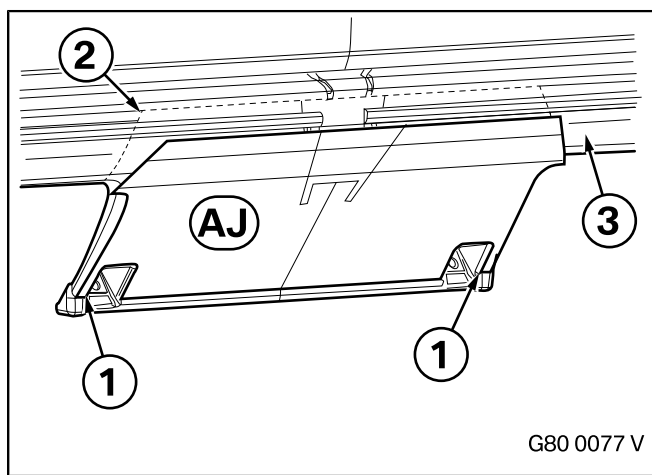
6. Install the M Performance rear silencer with rear diffuser



- Use the flap control (1) from the standard exhaust system. The two flap controls (1) must not be confused. The left and right positions must be maintained as a result of the adjusting screw position (2). ◀

Place the left flap control (1) in the bracket (3) on the left front pipe. As you do so, ensure that the adjusting screw (2) engages in the bracket (3) without catching and can be pressed inwards. Tighten the three existing screws as described in **ISTA/AIR**.

Use the same procedure for the right flap control.



For G80, G81, G82 and G83 cars

- Print the template **AJ** part 1 and part 2 from the annex **without scaling** on **DIN A4** paper, cut them out and glue them together.

Take care not to damage anything in the package space behind it when you cut the rear apron. ◀

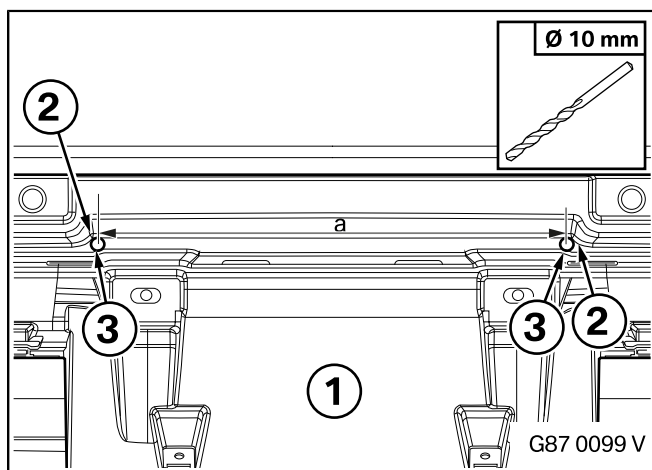
Align the template **AJ** from below on the centre section of the rear apron. Use the two recesses (1) to help you. Press the template **AJ** upwards into position. Draw the line (2) on the rear apron (3) using suitable tools. Then remove the template **AJ**.

Cut the line (2) with the suitable tools and deburr it.

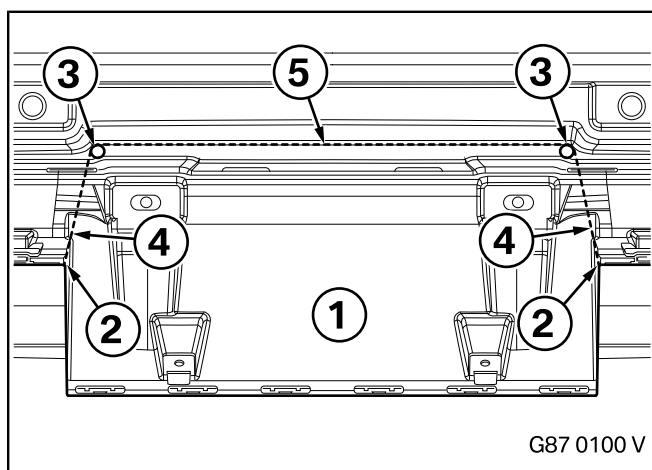
For G87 cars only

- Take care not to damage anything in the package space behind it when you drill the rear apron (1). Drill to a maximum depth of **15 mm**. ◀

The rear apron (1) has two curves with corners (2). Drill a hole (3) using a **10 mm** drill bit in each of these corners (2) at a distance of around **a = 342 mm**.



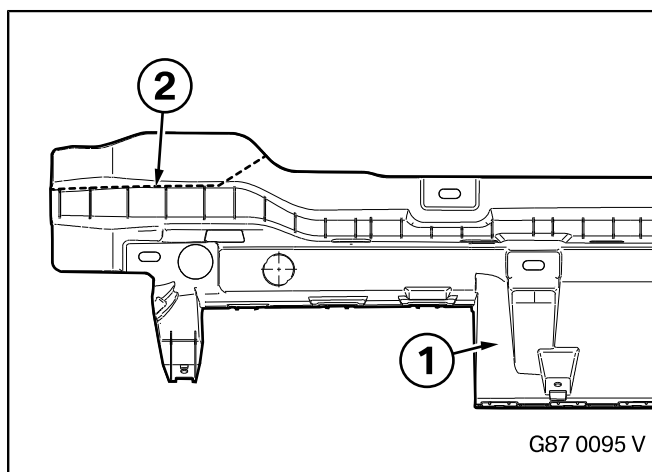
6. Install the M Performance rear silencer with rear diffuser



▶ Think about the package space behind it when you cut the rear apron (1). ◀

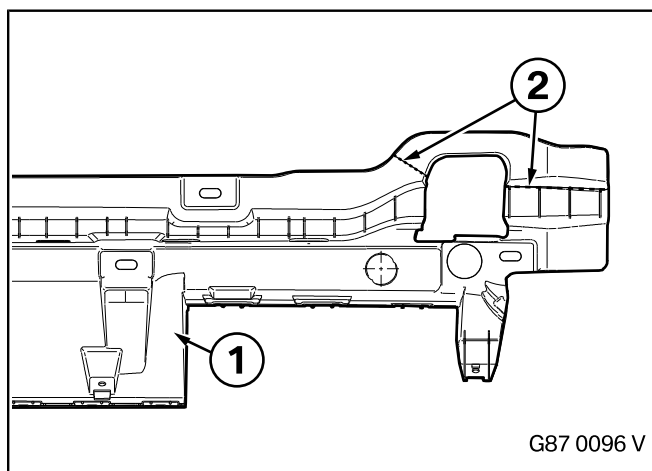
Make a mark (4) from the corners (2) to the external edges of the holes (3). Mark the top external edge of both holes (3) with a line (5).

Cut and deburr the lines (4) and (5) using suitable equipment.



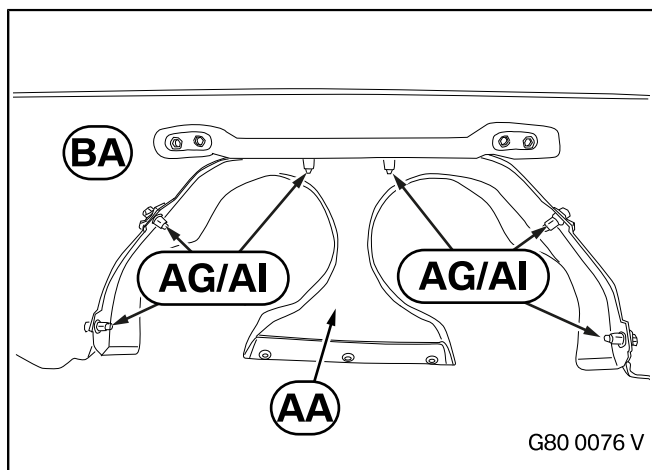
▶ The adapter (1) (whose rear view is shown here) must be cut on the left-and side along the line (2). ◀

Cut and deburr the adapter (1) along the line (2) using suitable equipment.



▶ The adapter (1) (whose rear view is shown here) must be cut on the right-and side along the line (2). ◀

Cut and deburr the adapter (1) along the line (2) using suitable equipment.

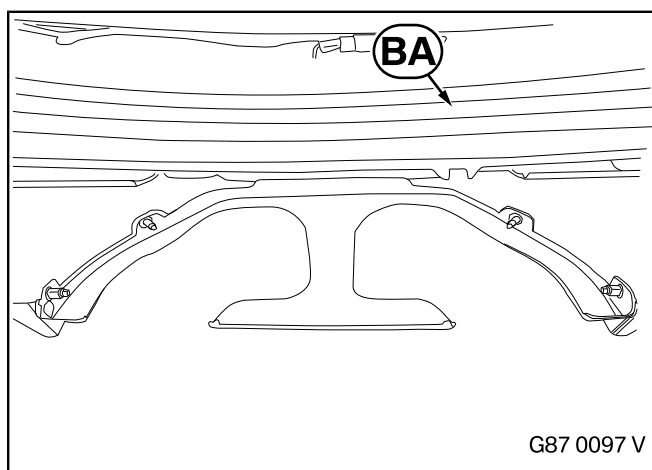


For all cars

▶ Use high temperature installation paste **AL** for the screw connections to prevent jamming. ◀

Secure the panel **AA** with the rear diffuser **BA** using the Allen screws **AG** including black washers **AI**. Tighten the Allen screws **AG** with a torque of **9 Nm**.

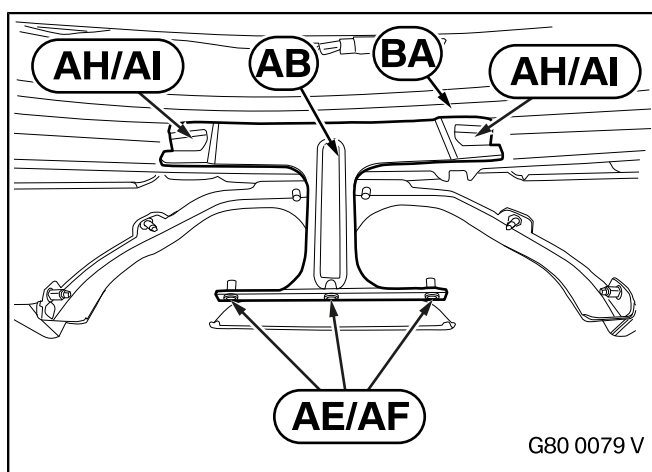
6. Install the M Performance rear silencer with rear diffuser



Use high temperature installation paste **AL** for the screw connections to prevent jamming.

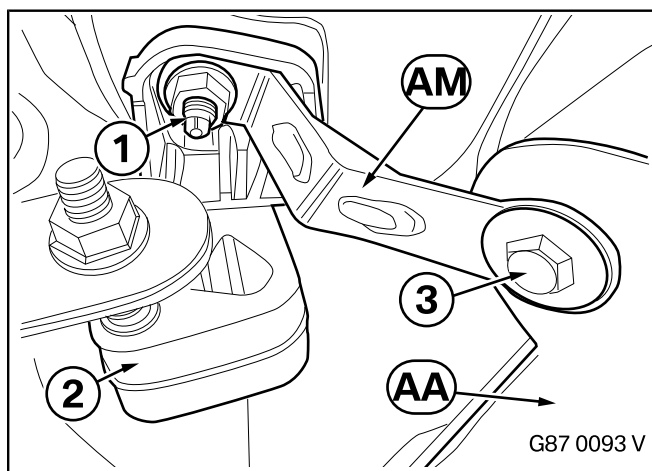
On the **G82** two suitable holes must also be drilled at the bottom of the apron so that the outer two plastic rivets can be inserted. ◀

Clip the rear diffuser **BA** to the rear apron as described in **ISTA/AIR** and secure it at the bottom outside using the two existing plastic rivets (not shown).



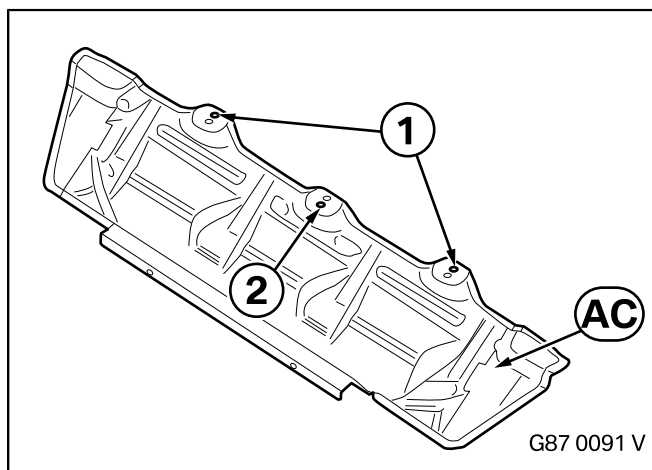
Screw the strut **AB** to the rear diffuser **BA** from the inside using the lock nuts **AH**, including two washers **AI** using a torque of **9 Nm**.

Tighten the fillister head screws **AE** together with the nylon washers **AF** using a torque of **4.5 Nm**.



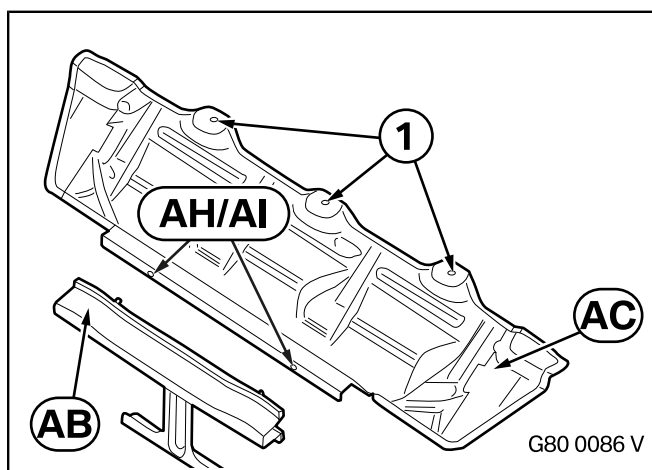
For G87 cars only

Undo the nut (1) and washer on the holder for the rubber bearing (2) and attach the holder for the rear diffuser **AM**, then secure the washer with the nut (1). Insert the existing screw (3) into the hole in the rear diffuser **AA** and tighten it.



The heat shield **AC** has a total of six holes. To install it on the G87, use the rear holes on the outside (1) and the front holes on the inside (2). ◀

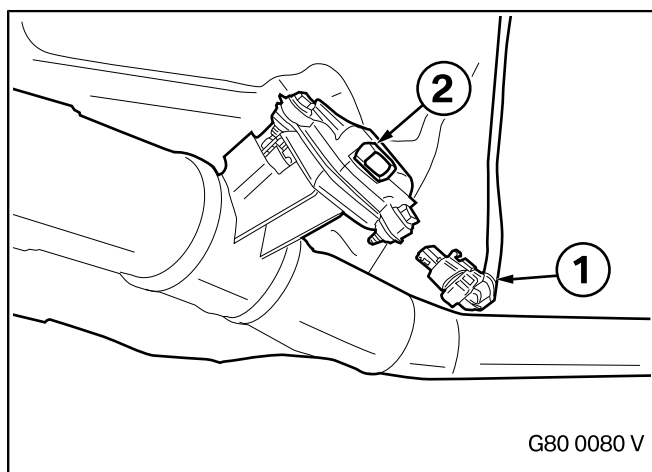
6. Install the M Performance rear silencer with rear diffuser



For all cars

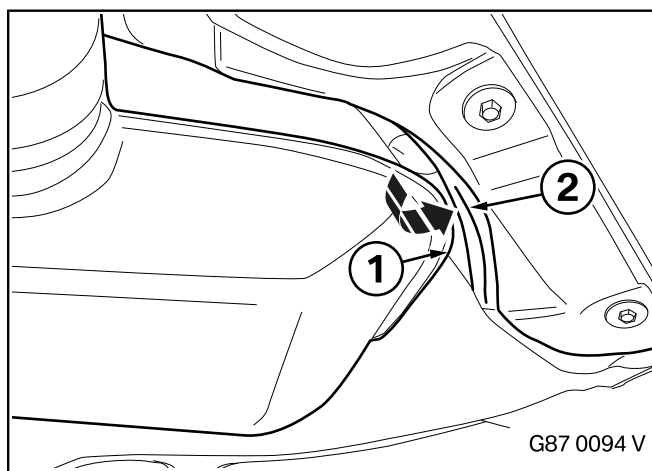
Use high temperature installation paste **AL** for the screw connections to prevent jamming. ◀

Secure the heat shield **AC** to the car using the three existing nuts (1) as described in **ISTA/AIR** and use the two stop nuts **AH** including two washers **AI** to install it on the strut **AB**. Tighten the stop nuts **AH** with a torque of **9 Nm**.



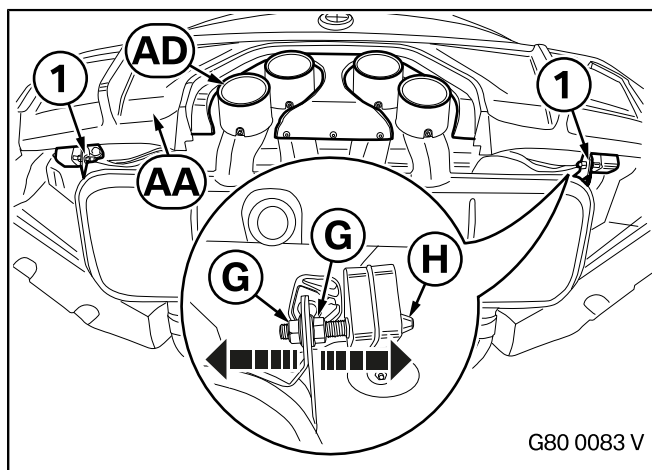
Then install the complete silencer system as described in **ISTA/AIR**. Align the clamping rings **F** again and tighten them with a torque of **25 Nm**.

Connect the cable (1) to the flap actuator (2) on both sides of the silencer system.



For G87 cars only

The heat shield (2) can be bent a little further away from the tank (1) on the sides using gentle pressure so as to increase the distance from the sides of the tank (1) on the exhaust system to the heat shield (2).



For all cars

Align the tailpipe trims **AD** in the recess in the panel **AA**. For this purpose the two nuts **G** on the holder pins **H** can be adjusted during the installation process (1).

Then secured the nuts with screw lock **AK**.

Remove the films from the tailpipe trims.
Install the carbon rear towing eyelet cover **BB** as described in **ISTA/AIR**. ◀

7. Concluding work and coding

The retrofit system does not require programming/coding.

- None

8. Care instructions for panel and matt black tailpipe trims

- Do not polish. This can cause shiny areas.
- Remove insect residues, bird droppings, tree resin, tar marks, fuel and oil immediately if possible.
- Use a soft sponge to remove these and do not rub forcefully. A suitable cleaning product is matt paint special cleaner (part number **83 12 2 285 244**).
- Paintwork repairs caused by mechanical damage (scratches, dents, etc.) or environmental damage (etching, etc.) should only be carried out by an approved BMW service station.
- Use only special paintwork sealants which are suitable for matt paints. Unsuitable paintwork sealants can significantly change the level of sheen or may cause a patchy finish.

9. **G8x template AJ part 1 - for cutting the G87 adapter holder, see above.**

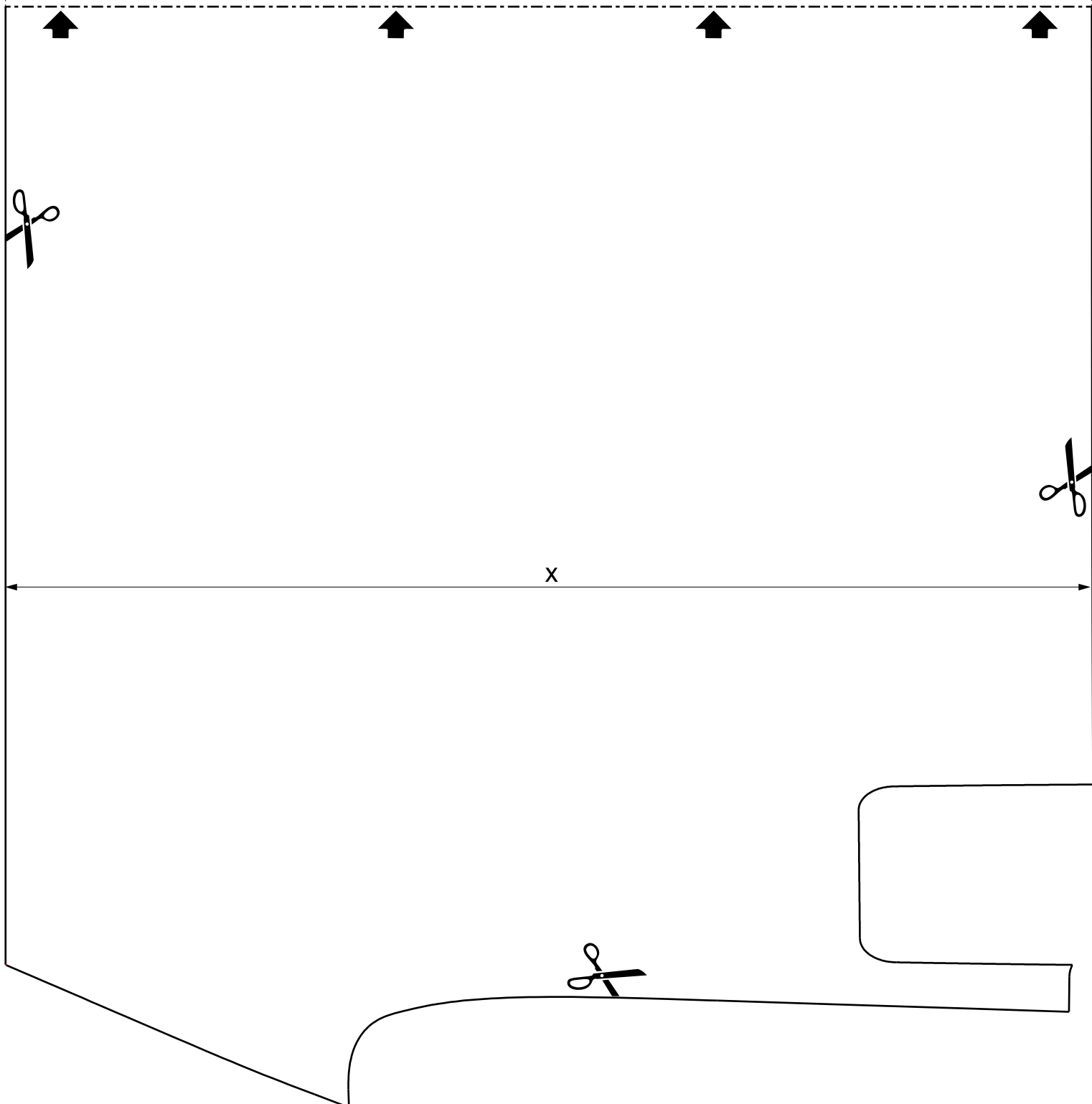


Print without scaling!

This template must be printed out in its original size (DIN A4); it must not be scaled. When displaying the PDF in Windows, ensure the following setting is made:

File -> Print -> Page Setup -> Shrink oversized pages: -> No/Actual size

Control dimension **x = 200 mm** ◀



10. G8x template AJ part 2 - for cutting the G87 adapter holder, see above.

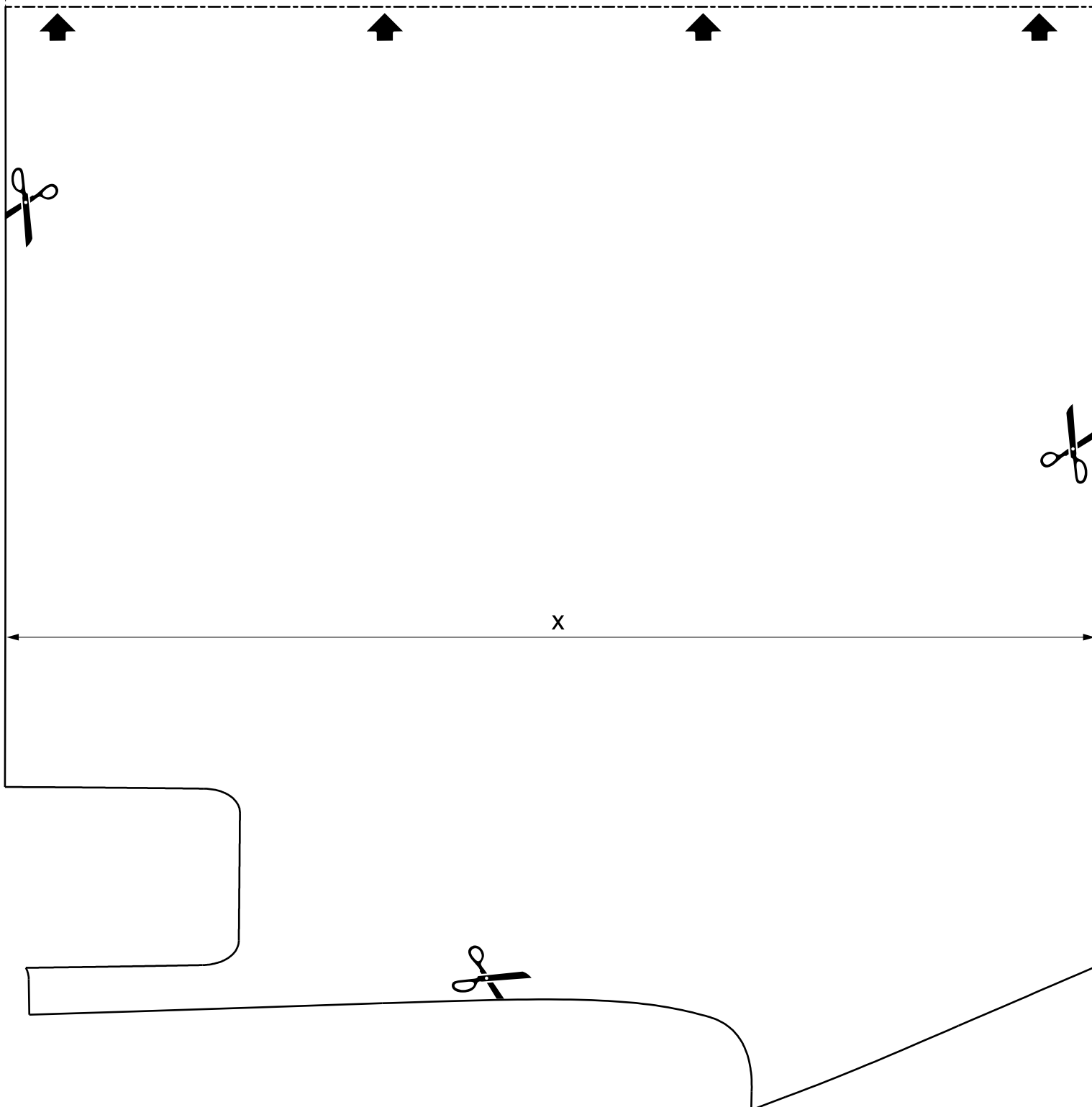


Print without scaling!

This template must be printed out in its original size (DIN A4); it must not be scaled. When displaying the PDF in Windows, ensure the following setting is made:

File -> Print -> Page Setup -> Shrink oversized pages: -> No/Actual size

Reference dimension **x = 200 mm** ◀



11. Report 21-00758-CP-GBM-00

G80, G82, G83
M3, M4

ECE silencer system

Part number 18 30 5 A23 283



Kraftfahrt-Bundesamt

D-24932 Flensburg

Auszug / excerpt

aus der EG-Genehmigung Nr. / from WVTa Nr.: e1*2018/858*00003*02
und dem Gutachten Nr. / and test report No.: 21-00758-CP-GBM-00 vom 27.07.2021
Fahrzeughersteller / manufacturer: BMW M GmbH, D-80809 München Seite 1 von 1

Fahrzeugtyp / vehicle type	Variante/Version Handelsbezeichnung / Variant /version commercial description	Gen.-Nr. / App.-No.
G234M	???? / ???????0 ???? / ???????V M3 Reihe, M4 Reihe	e1*2018/858*00003* ab Nachtrag 00

An o.a. Fahrzeugen, die im Geltungsbereich der StVZO zugelassen sind, dürfen gemäß
§ 19 Abs. 3 Nr. 1.b und Abs. 7 StVZO folgende Fahrzeugteile nachträglich ein- oder angebaut werden / According
to Art. 19 sec. 3 No. 1.b in combination with sec. 7 StVZO retrofitting for the subsequent named vehicle parts is
permissible:

Lfd. Nr. / Seq. No.	Fahrzeugteil(e) / vehicle part(s) (Benennung und Identifizierungsmerkmal(e)/ Denomination and identifying properties)		Randbedingungen / Boundary conditions (z.B.: Geltungsbereich, Ausrüstungsgegenstand, Einschränkungen, Änderungsdaten für Fz.-Papiere / e.g. scope, equipment, limitations, amendment of registration)	Auflagen / requirements
1	<u>Nachschalldämpfer/ Rear silencer</u> Endschalldämpfer Titan/ rear silencer titan: Vorrohr Titan links/ Pre tube left titan: Vorrohr Titan rechts/ Pre tube right titan:	<u>Kennzeichnung:/ Identification:</u> 5A23284 5A23280 5A23281	<u>Änderungsdaten für Fz.-Papiere: Amendment of registration:</u> Feld U1: 73 Feld U3: 95 (M3/M4) Feld U3: 96 (M3/M4 Competition) Feld 22: m. geänd. Endschalldämpfer, Kennzeichnung: 5A23284, i.V.m. Vorrohr li/re, Kennzeichnung 5A23280/1***	Anbauabnahme durch aaSoP bzw. einen Prüferingenieur einer aaÜO nicht erforderlich / acceptance test by officially recognized expert is not necessary Änderung der Fz-Papiere ist nach §13 FZV unverzüglich erforderlich / Amendment of registration through registration office acc. to §13 FZV is immediately necessary

Die Betriebserlaubnis des Fahrzeugs bleibt nach dem Ein- oder Anbau der o.a. Fahrzeugteile bei Einhaltung der
ggf. genannten Randbedingungen und Auflagen bestehen. /

The type approval remains valid after the installation of these vehicle parts as long as the basic conditions
and the requirements are fulfilled

Eine Ein- bzw. Anbauabnahme durch einen amtlich anerkannten Sachverständigen oder Prüfer für den Kraftfahr-
zeugverkehr oder von einem Kraftfahrzeugsachverständigen oder Angestellten nach Abschnitt 4 der Anlage VIIIb
StVZO ist nicht erforderlich. / A technical inspection by an approved vehicle inspector is not required.

Der Fahrzeugführer hat diesen Auszug mitzuführen und zuständigen Personen auf Verlangen auszuhändigen. /
The vehicle driver has to carry this extract with him and must present it to authorised persons when required.

Kraftfahrt-Bundesamt
Im Auftrag
Erkan Sentürk

Beglaubigt:

C. Hansen
(C.Hansen)



Flensburg, den 30.08.2021